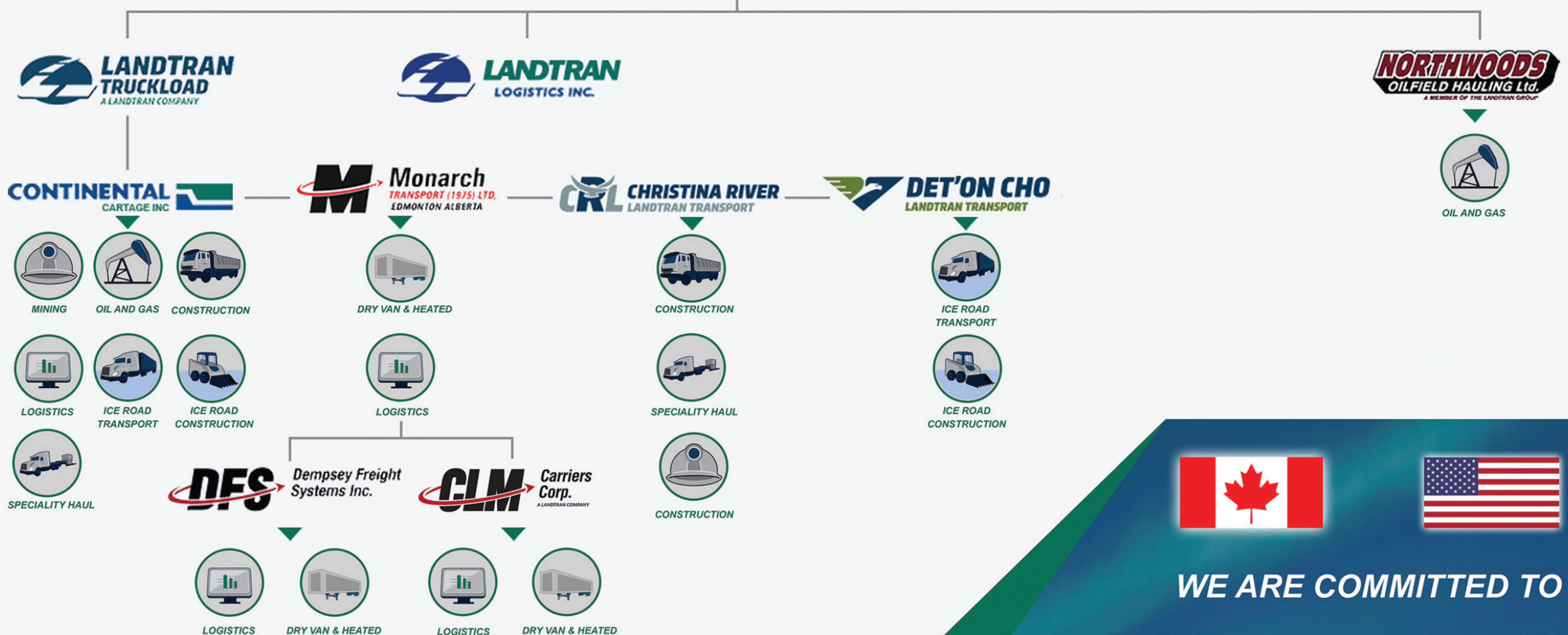




FACILITATING EVERY TRANSPORTATION NEED

As the proud industry leader in truckload, less-than-truckload, heavy haul and specialized commodity transport, we are dedicated to providing a high level service with a personal touch!

One Call And We'll Haul It All!

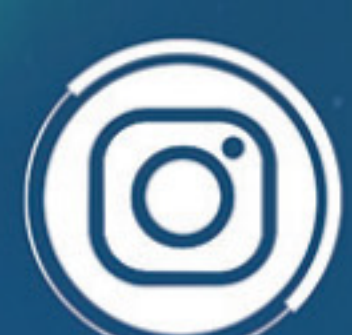


WE ARE COMMITTED TO

- SAFETY
- INCLUSIVITY
- DIVERSITY
- DEPENDABILITY
- STRENGTH



@LANDTRAN.TL



@LANDTRAN.TL

HIGH LEVEL

YELLOWKNIFE

GRANDE PRAIRIE

FORT MCMURRAY

EDMONTON

PRINCE GEORGE

VANCOUVER

CALGARY

ARMSTRONG



ATTENTION DRIVERS

FIND #yourRIGHTfit

KEY PROJECTS

OIL & GAS

- 4000 FTL & LTL shipments for site construction in Anzac, AB
- 1850 FTL shipments for site construction in Fort Hills, AB
- 450 FTL shipments for site construction in Hanginstone, AB
- 600 Loads for Pipe Stringing project in Fort McMurray, AB
- 250 loads for Rig Mat project in Conklin, AB over 24 days
- Daily service for over a year covering 500 LTL shipments to Fort Hills, AB



CONSTRUCTION

- 400 loads for construction of Hospital in Yellowknife, NT
- 300 loads for construction of airport expansion in Richmond, BC
- 900 yearly loads of pipe from BC into Alberta
- 400 yearly loads of precast cement from Vancouver into interior BC
- 300 yearly loads of precast cement for Edmonton city P&D
- 500 yearly loads of building materials out of Vancouver servicing western Canada
- 1500 yearly loads of lumber servicing western Canada



MINING

- 450 loads for construction of Potash mine in Saskatchewan out of Ontario
- 200 loads for construction of mine in Mayo, YT
- 80-100 yearly shipments to ports to service mines in Nunavut
- 9000 plus loads over the last 5 years servicing the mines north of Yellowknife, NT



SPECIALTY HAUL

- Multiple Double Drop loads hauling Bag Houses, ranging in size from 10' to 20' high and wide in AB and BC
- 23' wide Rock boxes from Wisconsin to Fort McMurray
- 24' wide classrooms
- Trombone shack hauls going to Ontario, Northern Alberta, Southern United States
- 8-10 Multi Axle loads through out Western Canada and Territories.



DRY VAN, HEATED AND REFER SERVICE

- Packaged Lubricants 130 loads a year from Edmonton AB to Northern BC
- Pulp - Forest products 600 loads a year out of Alberta to Vancouver BC area
- Consumable Goods 1300 loads a year out of Vancouver BC area to Alberta
- 450 yearly loads from Prince George servicing Northern BC
- BC - US East Coast - 300 - 350 loads per year. Dry Goods
- AB - NV/AZ/TX - 120 - 150 loads per year. DG
- BC/AB - AL/GA/FL - 60 - 80 loads per year. Dry Goods
- AB - TX/LA = 50 - 70 loads per year. Heat required Dry Goods.



LOGISTICS & FREIGHT MANAGEMENT

- Western US (CA, NV, OR & WA) to AB Aprox 460 loads per year
- Southern US (TX,OK,LA, MI, AL & GA) to AB Aprox 380 loads per year
- AB to MB Aprox 1200 Tridem loads per year
- AB to SK Aprox 800 Tridem loads per year



FIND

YOUR RIGHT PRICE

Sales@LandranTL.com



CONTACT

25245 111 AVE
ACHESON AB, T7X 6C8
PHONE: 1.780.452.9414
TOLL FREE: 1.877.452.9414